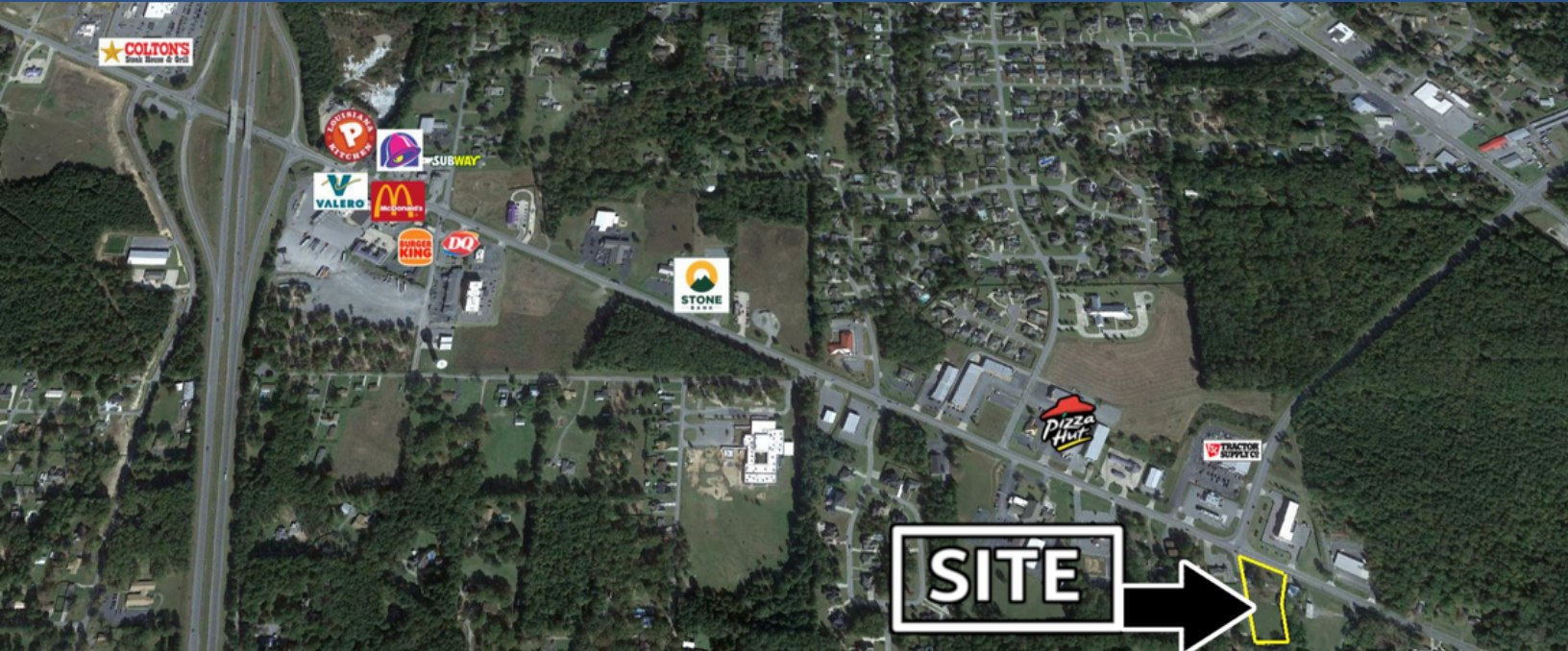


**For Sale**

**6810 & 6816 Sheridan Road, White Hall, AR**

**Price: \$750,000 - \$9.09 psf**



- **High Visibility Location on a Level Corner Lot at Sheridan Road and Jefferson Parkway, approximately 1 Mile From I-530.**
- **Zoned B-1 with Numerous Commercial Uses and is Located in the Growth Corridor of White Hall.**
- **Traffic Count approx. 13,000 VPD; Approved Signal**



**Agent: Brian Winstead**  
**PH 501.580.9996**  
**brianwinstead@comcast.net**

